

Adobe Photoshop

Commonly Used Tools

Guide

January 2024

Image Services, University of Toronto

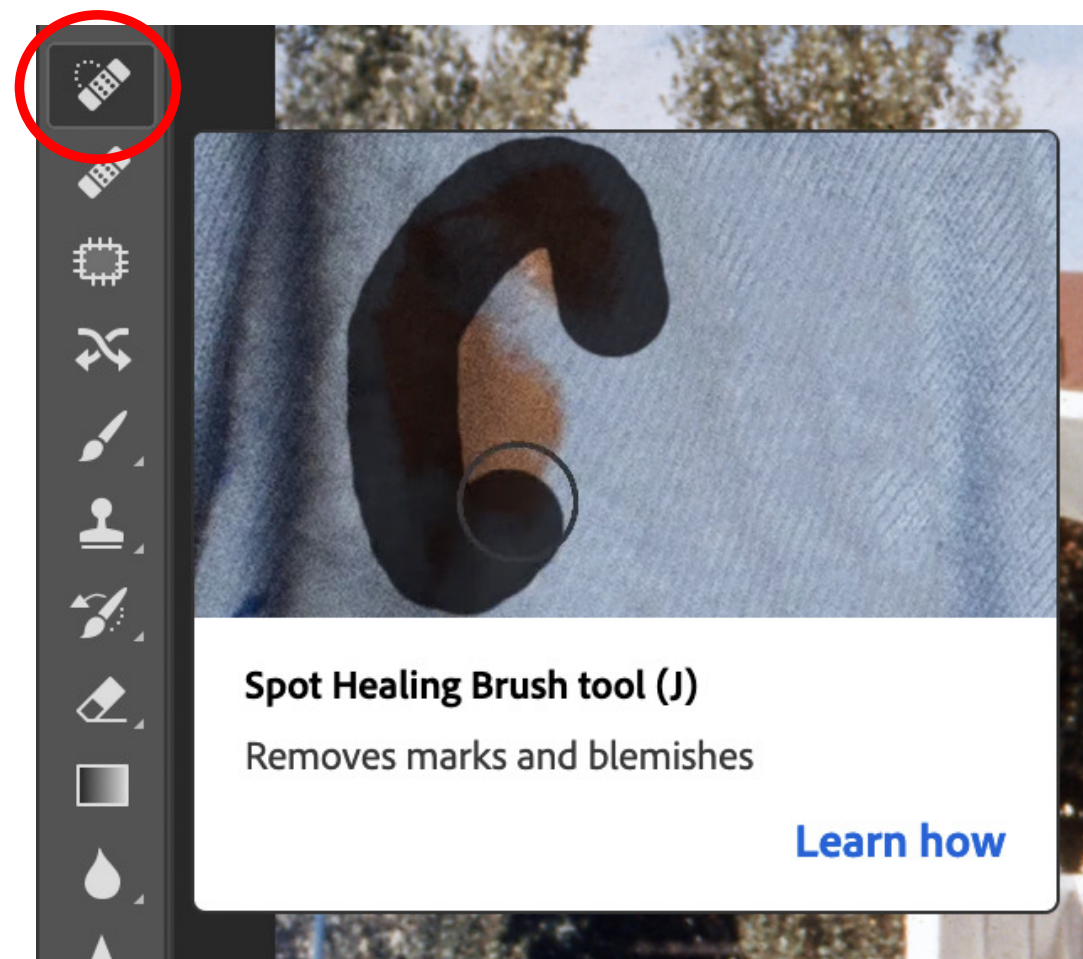
Written and designed by Nadia Mariyan Smith

Table of Contents

Cleaning.....	2
Colour Correction.....	4
Grayscale.....	5
Flip.....	6
Crop & Straighten.....	7
Batch & Automate.....	8

Cleaning

The **Spot Healing Brush Tool** removes unwanted spots, marks, or small objects in your image.



Hold the **spacebar** to **activate the Hand tool**. Let go and you are back to the last tool you were using.

Use the **[and]** keys on the keyboard to make **brush size** bigger or smaller.

To **undo** an action, press **Command + Z**. To **redo** an undone action, press **Shift + Command + Z**.

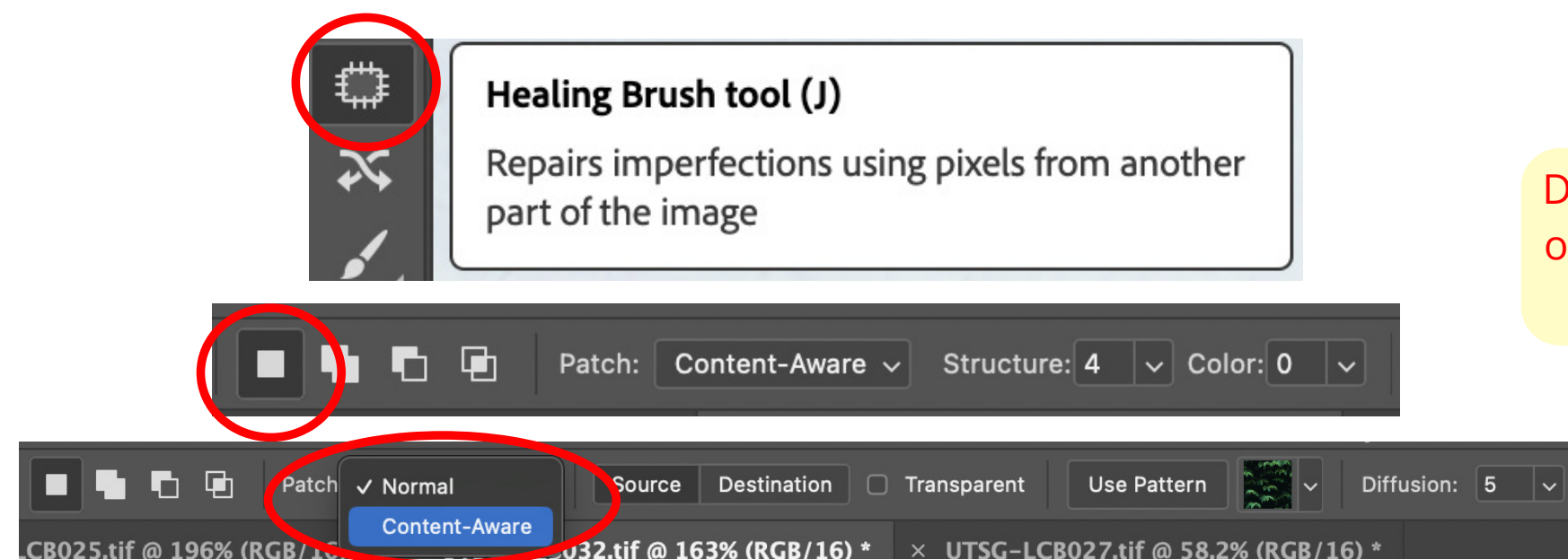
before

after



Cleaning

The **Patch Tool** replaces a selected area using pixels from another part of the image.



Different settings will be more or less effective depending on the image.

before

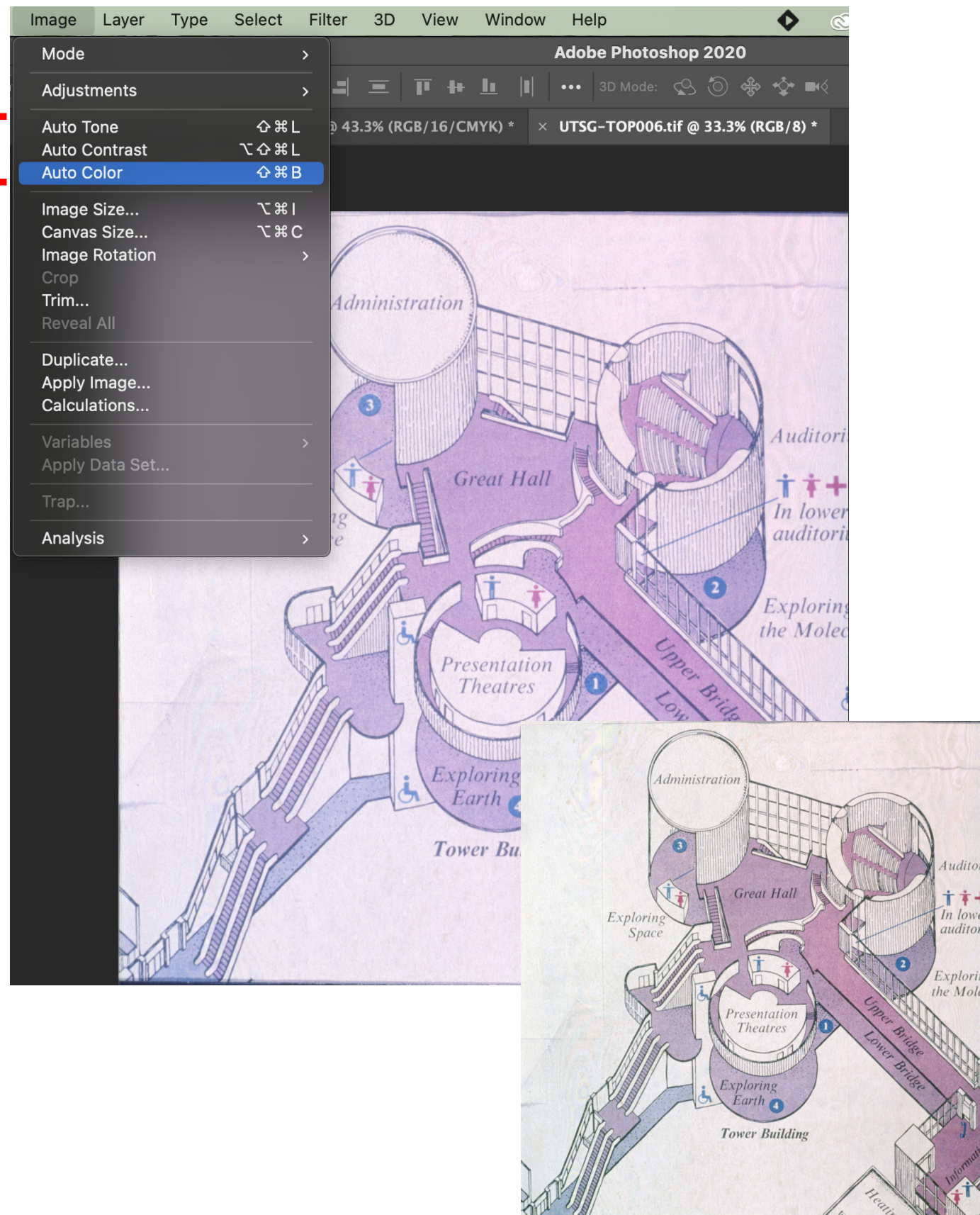


after

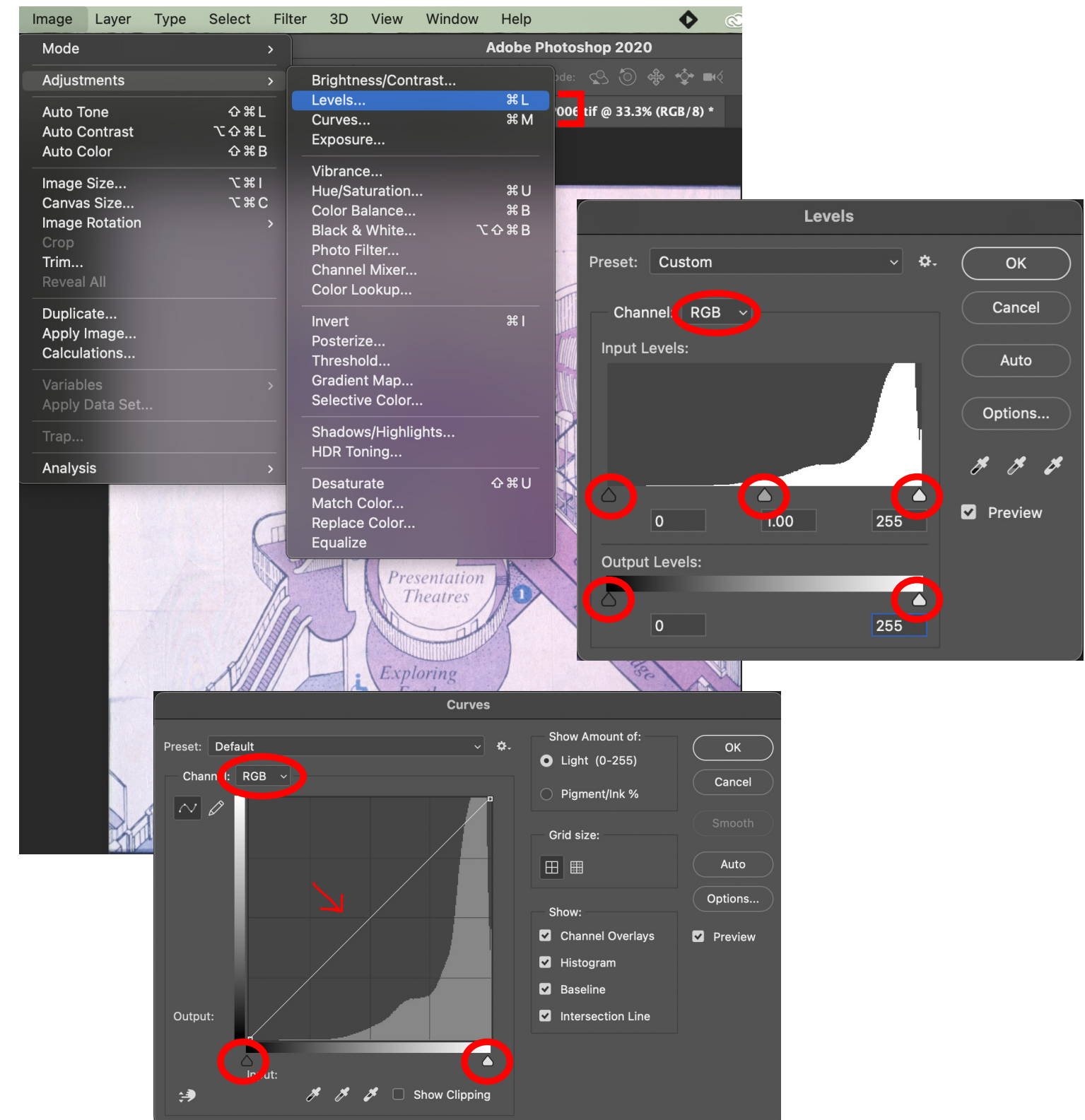


Colour Correction

Quick correction*



Detailed correction*

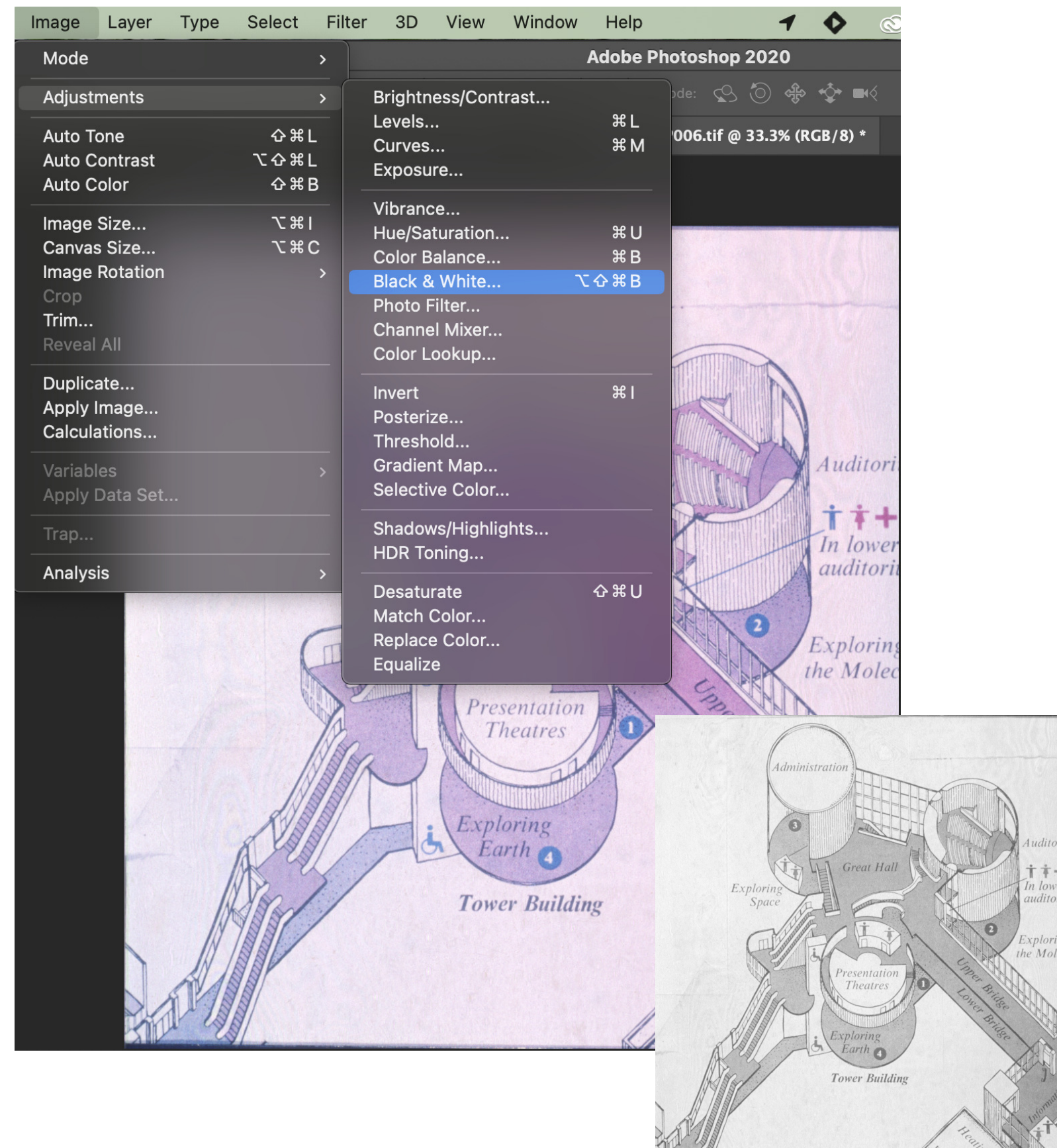


**recommended for archival processing*

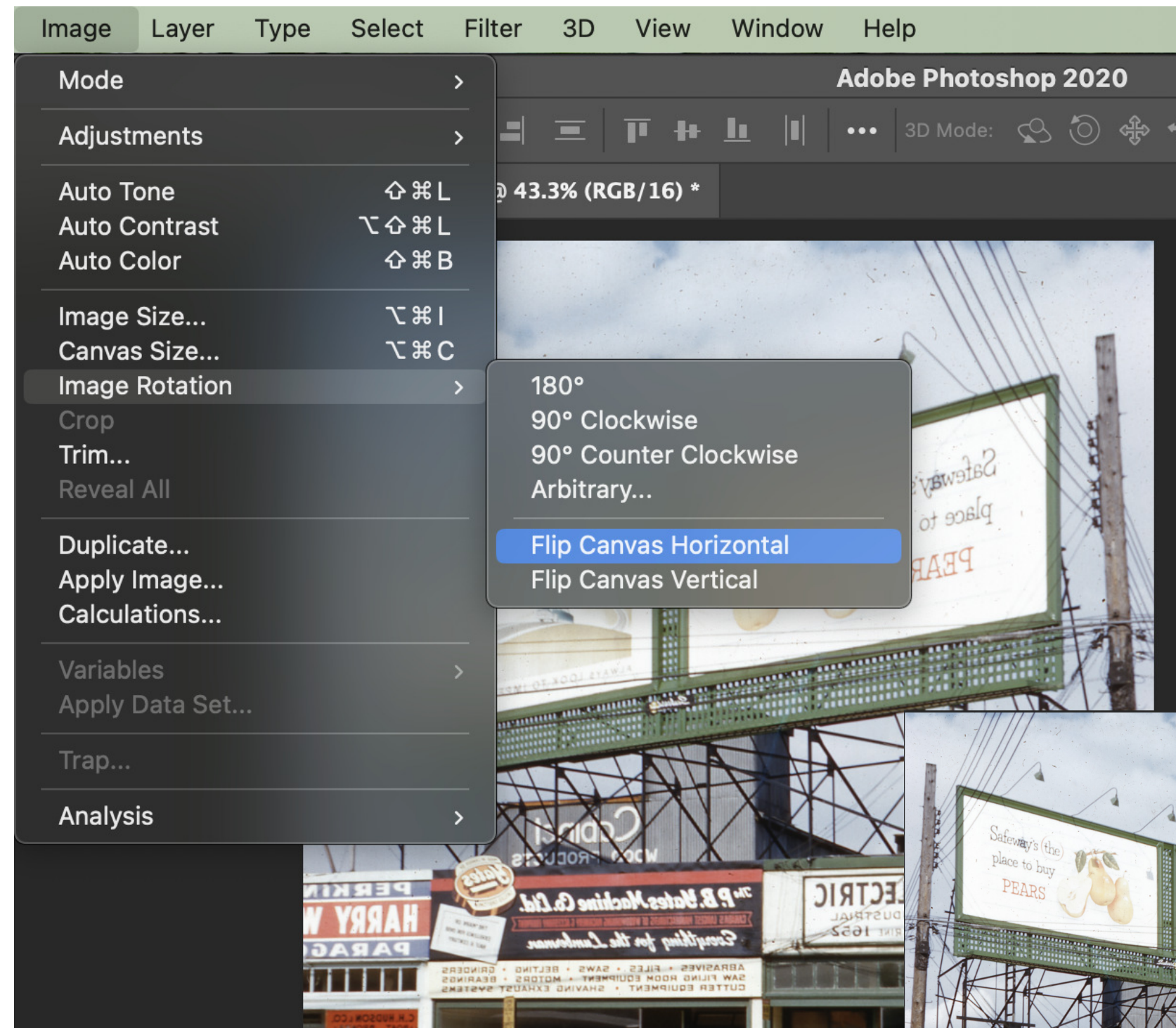
**recommended for individual client requests*

Grayscale

Occasionally, film has degraded too far to fix the colour imbalance. If this is the case, images can be turned into B&W images.



Flip

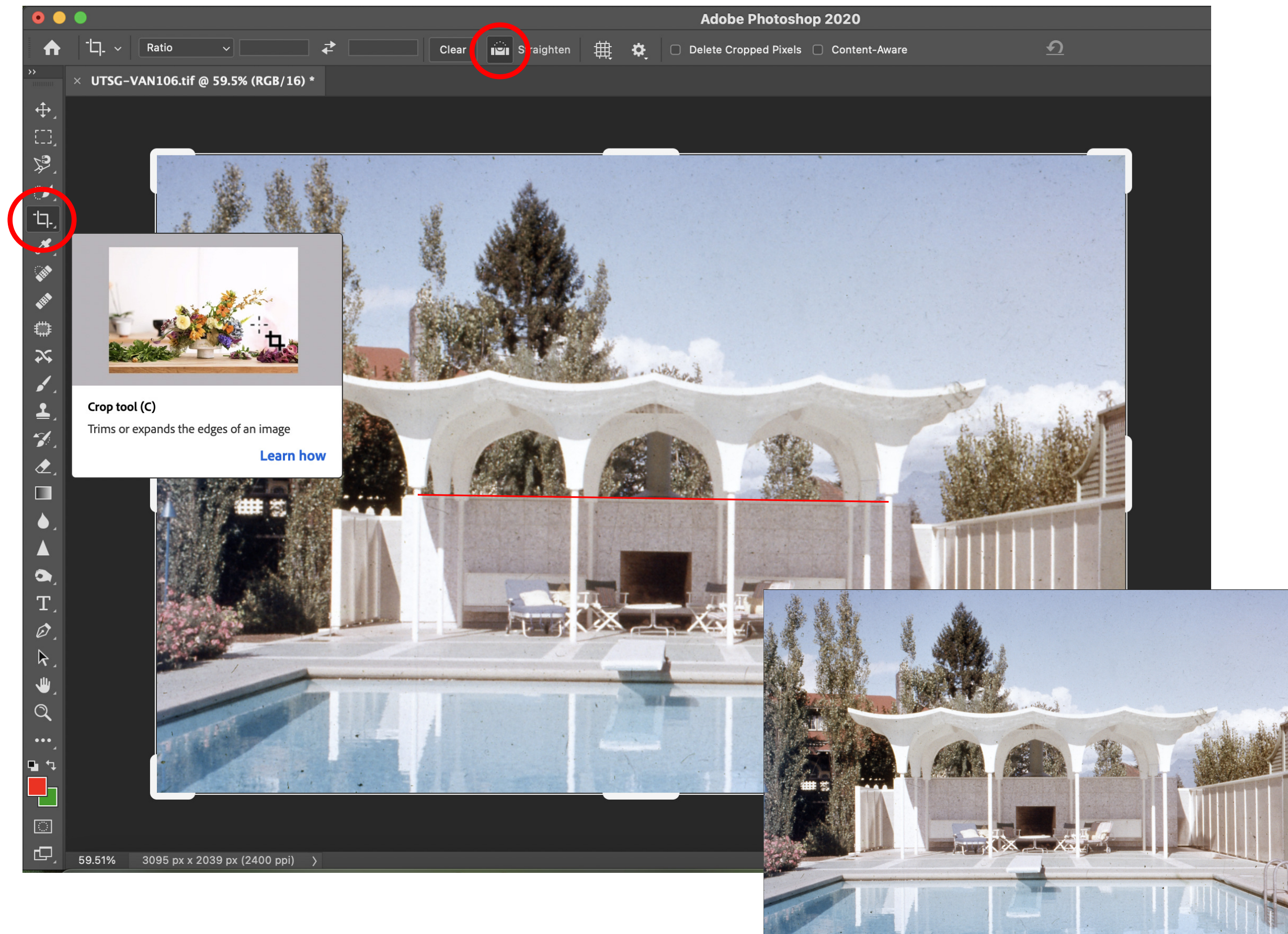


If the image is mirrored and needs flipping,
that means it was scanned the wrong way.
Avoid this for best results.



Crop & Straighten

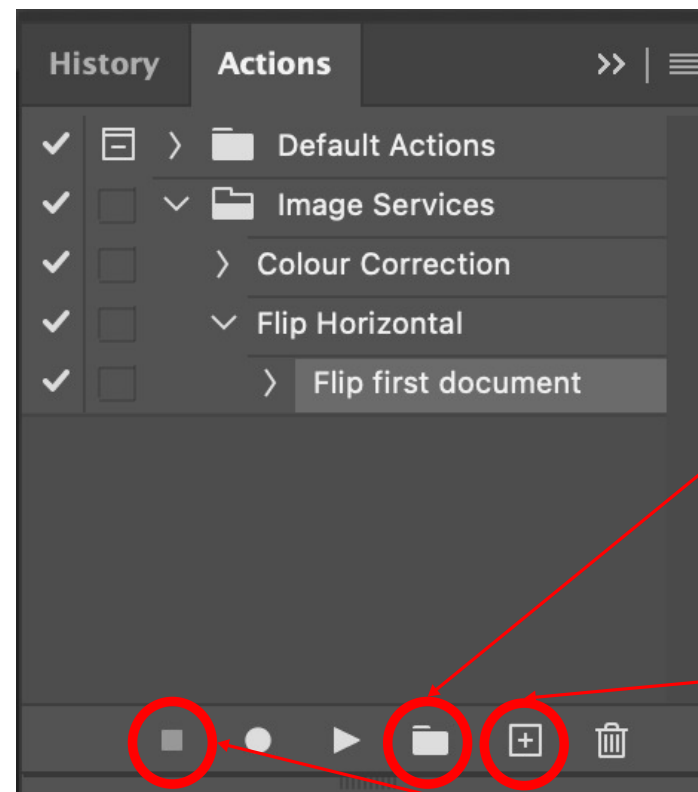
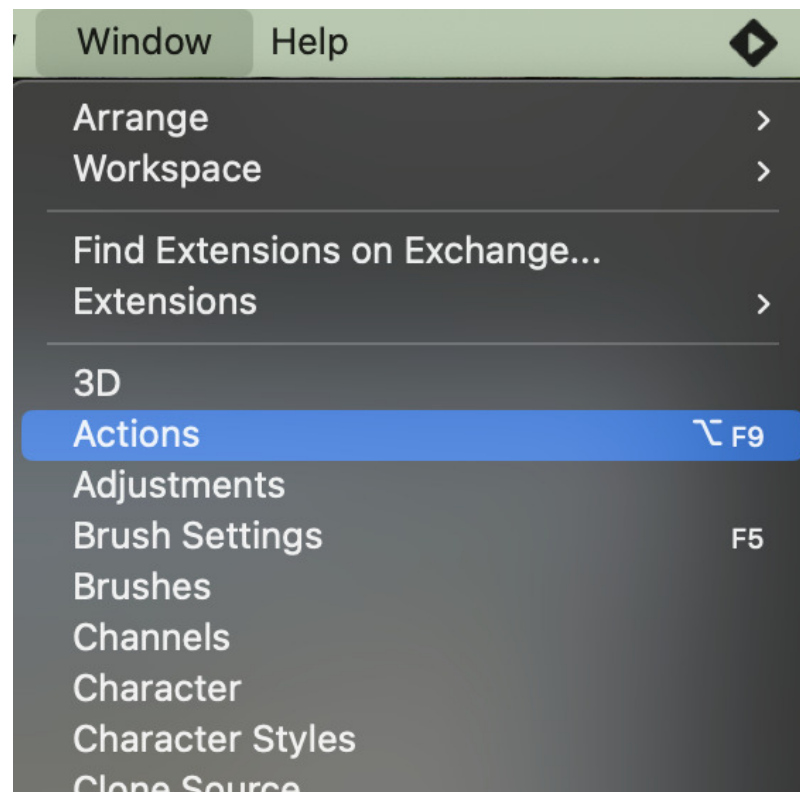
After clicking the **straightening tool**, draw across a line that is supposed to be straight



Batch & Automate

Batch editing is useful for when multiple images need the same correction.
Example: all images need to be flipped, colour corrected, or turned into B&W.

#1



Open up the first image out of the batch of images you would like to edit.

1. Open the 'Actions' window

2. Create a folder (ex. 'Image Services')

3. Select 'Create a new action' and perform the action (ex. flip the image horizontally)

4. Select the 'Stop' button

#2

